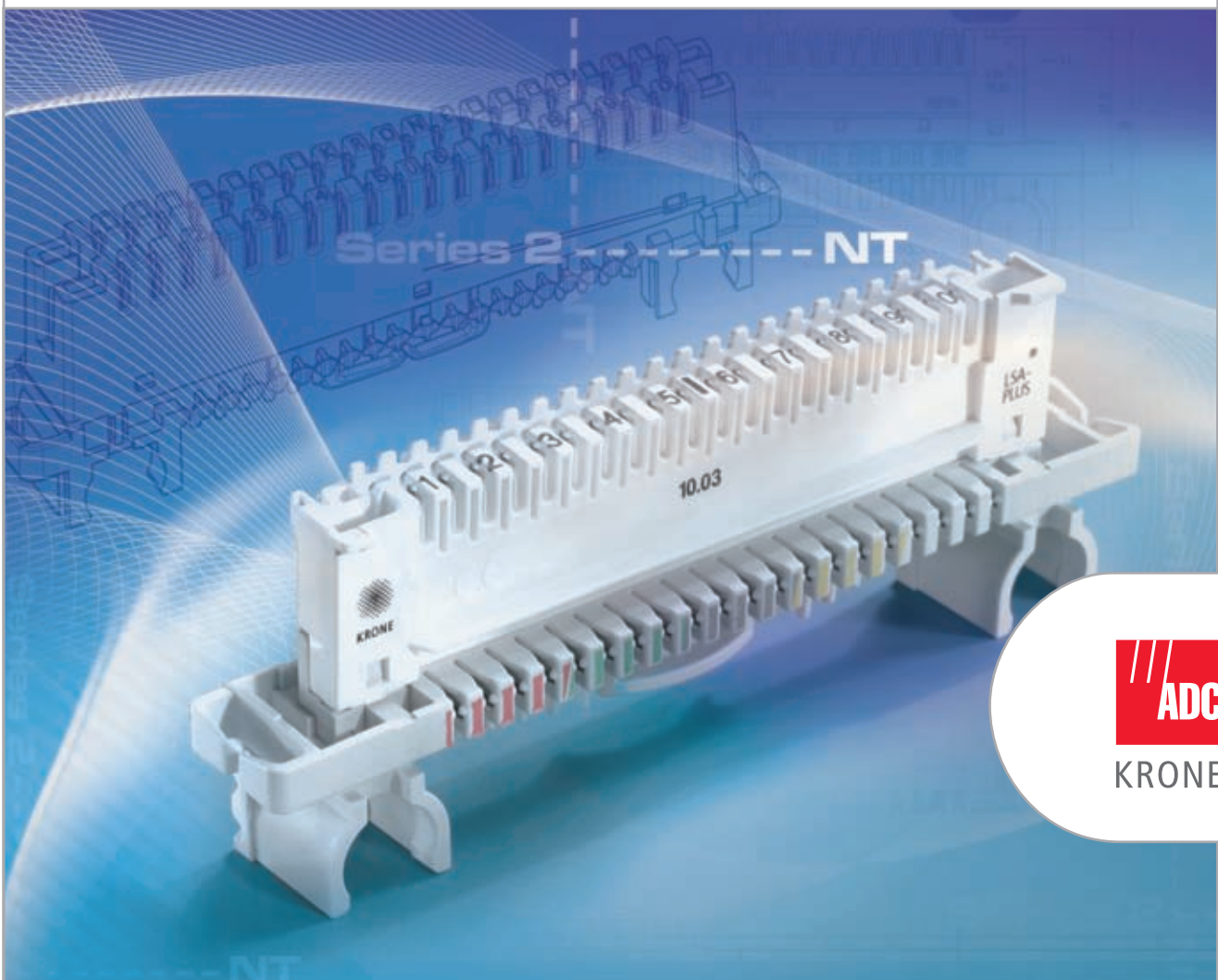


LSA-PLUS® NT 100-pair Protection Block



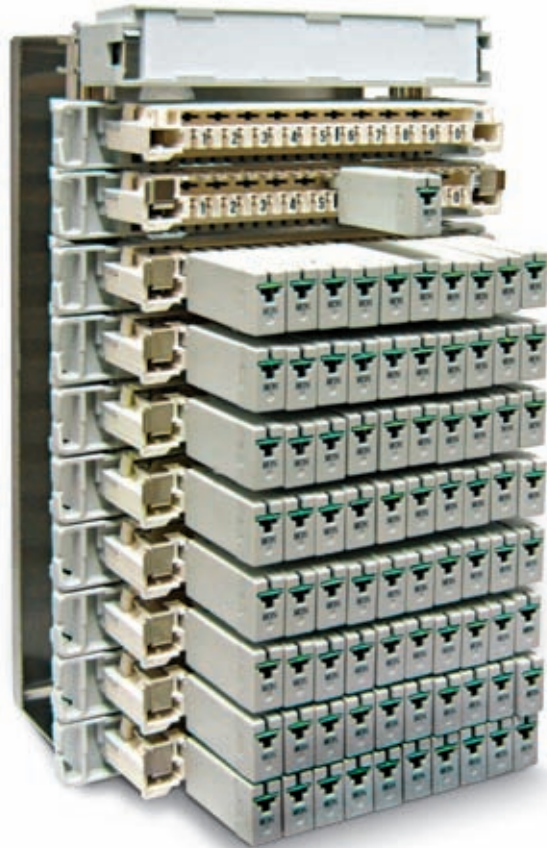
- Space savings and connection reliability in cable distribution.
- Optimal access security in network interfaces.
- Installation with the same tool as LSA-PLUS® in voice and data distribution.

An Overview of the Advantages

LSA-PLUS® NT is a product that offers reliability in several forms:

- It protects your cable wiring from accidental access during jumper work.
- It provides you with a secure investment for the future and it offers you the proven reliability of the LSA-PLUS contact. Furthermore, its mounting pitch of 17.5mm is about 33% less than that of traditional modules for cross connection cabinets, while remaining robust.
- With LSA-PLUS NT you can set up your distributor as quickly as you previously did with LSA-PLUS Series 2.
- Together with the high degree of clarity in arrangement, there is the advantage of an absolute minimum of connection errors.

LSA-PLUS® NT 100-pair Protection Block



LSA-PLUS® NT - an investment that quickly pays for itself

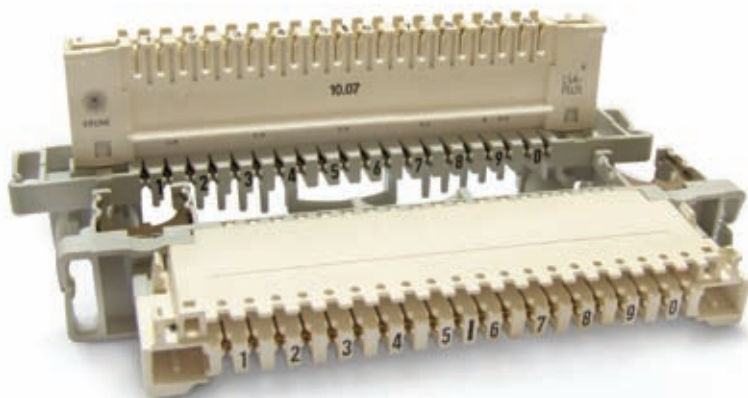
LSA-PLUS NT is a connection module for all telecommunication distributors which is very easy to work with. With high connection density, it requires only the traditional LSA-PLUS insertion tool for connection work. The system side is situated at the back at a right angle, so that there is no possibility of accidental access to the system connections. The test access and the jumper contacts are accessible from the front and very clearly arranged. The unique design of the LSA-PLUS NT module results in quick and reliable work with the module, as well as a very low rate of connection errors.

The modules are designed for mounting onto Profil® bars. Also available are complete protected blocks with the most important accessories in one pre-assembled ready unit. The protected block LSA-PLUS NT comprises 10 LSA-PLUS NT modules with 10 pairs each, a label holder, Profil mounting frame and fixing elements, as well as 100 over-voltage and over-current single-pair NT protectors. The modules are mounted onto a Profil frame. The module pitch is 17.5mm. A special feature of the LSA-PLUS NT is that the contacts for the cable wires and the jumpers are not located on the same level. The cable wires are fed in from the side and at the back so that when the module has been installed only the contacts for the jumpers are directly accessible. If there is a special need to carry out work on the cable side the module can always be released from its mounting position so that new wiring work can be done.

The jumpering space between the modules is just as large as that of the LSA-PLUS Series 2 modules. Nonetheless, there is more space for the jumper wires as the cable and jumper sides are in different levels. One result of this is that shielded jumper wires can be more easily terminated. Despite the generous jumper channels the modules are mounted with a small pitch of 17.5mm. Compared with other modules (e.g. LSA-PLUS Series 2) this results in a space savings of about 33% in the distributor.

LSA-PLUS NT, which is terminated using the standard LSA-PLUS insertion tool, can be used at all sites where many copper lines have to be distributed; or where active components also have to be installed so that there is only limited space remaining. This is mostly the case in cross connection cabinets.

It is the FTTN cabinet that LSA-PLUS NT reveals its true performance: there is little space in a OSP active cabinet. Here the space-saving design of LSA-PLUS NT is precisely what is called for. The design of LSA-PLUS NT prevents un-authorized access to the cable side of the module. This frequently happens when an active cabinet is under two different maintenance groups.



LSA-PLUS® NT 100-pair Protection Block

Application

Disconnection and connection modules

The LSA-PLUS® NT modules are available as disconnection and connection modules. Disconnection modules have a white housing and connection modules have a light-grey housing, for easy identification. The test access or the disconnection point is located directly above the jumper contact.



Test cords

For test purposes, 2- and 4-pole cords, so-called "adapter cords" are offered. On one end they have a plug designed for the LSA-PLUS® NT module, which is equipped with a snap-in element; on the other end there are 2 or 4 sockets for 4mm plugs (banana plugs). The 2-pole cord is for parallel access and can be used with both connection and disconnection modules. The 4-pole cord has been especially designed for measuring the incoming or outgoing signals in disconnection modules.



Over-voltage and over-current single-pair protection

This surge protection is designed to protect personnel and equipment from indirect lightning strikes, electro-magnetic disturbances as well as short-circuit conditions between different networks. The plugs can be fitted in LSA-PLUS NT Disconnection or switching modules. The protection comprises a 3-pole Gas Discharge Tube (GDT) fail-safe contact as well as reversible PTC current protection devices.

When choosing protection it is important to note that the operating voltage and current must not exceed the values quoted for the components. Operation of the fail-safe is irreversible. When, due to an extreme overload condition, the fail-safe operates, thereby routing the disturbance to earth, the protection plug must be changed out.

After wiring the NT module, an earth bar is fitted to the jumper side of the module, providing a low-ohmic connection to earth (normally, disturbances come from the cable side). The ComProtect plug is inserted into the module so that the groove on the plug mates with the tongue of the earth bar.



Various identification and marking possibilities

For easy identification, every pack of 10 modules comes with 22 pre-printed number flags. If a more detailed identification is required, the hinged label holder can be used. This is snapped onto the module and allows the individual identification of every single pair. Marking caps can be used to mark individual pairs to identify special lines or protect a given line from being mistakenly switched.

TECHNICAL DATA

Mounting pitch: 95mm for 10-pair version

ELECTRICAL

Contact stability satisfying IEC 352 Part 4
Electrical safety satisfying EN 60950
All wires between 0.4 and 0.8mm conductor diameter can be connected
Stranded wire can also be connected
Conforms to CE low-voltage guidelines

MECHANICAL

Temperature-resistant from
-40 °C to 90 °C
Resistant to chemicals, also to alcohol and cleaning agents
Non-flammable and self-extinguishing in according to UL 94-V0
Metal: stainless steel
Plastic: recyclable, UL 94 V0

DIMENSIONS

Width: 112mm
Height: 17.5mm
Depth: 27.5mm

PROTECTION DATA

DC spark-over voltage	230V ±20%
Impulse spark-over voltage at 1KV/ μs	< 700V (a/b-e)
AC discharge current :	5A rms (a/b-e)
Impulse discharge current (8/20 μs):	5KA (a/b-e)
Line resistance :	14 ohm ±20 :a,b Δ R < 1 ohm
Trip current @ 25 °C	> 160 mA
Nominal operating current :	70mA
Typical Capacitance (a/b-e, a-b at 1 MHz)	< 10 pF
With failsafe complied to:	RoHS, ITU-T K-12, IEC 68-2-6, DIN IEC 68 part 2-1/2/3

Please contact ADC KRONE for detailed specifications.

Ordering Information

Description	Pack Qty.	Product No.
100-pair NT Over-voltage and Over-current Block	(1) Unit	8810 3 010-10
NTP C-GB180A1 (set of 10 pieces with 1 earth bar)	Set of 10	8800 1 010-16
LSA PROFIL NT Disconnection Module, 10-pairs, printing: cable end & jumper end: 1, 2, 3...0, white	Set of 1 (set of 10 pieces)	7014 1 601-01
Profil Earth Clips	PC 1	6089 3 202-00
Label holder, 2/10	PC 1	6092 2 012-02
NT Profil Frame (1+10)-way	PC 1	8808 2 002-10
NT Mounting Aid for 10-pair Module	PC 1	6690 3 031-10

LSA-PLUS® NT 100-pair Protection Block



LSA-PLUS® NT 100-pair Protection Block



www.adckrone.com/sg

SINGAPORE 100 Beach Road #18-01 Shaw Tower Singapore 189702

INDONESIA

Ph: +62 21 520 0231, Fax: +62 21 522 1312

PHILIPPINES

Ph: +63 2 848 9901, Fax: +63 2 848 9904

THAILAND

Ph: +662 512 3688, Fax: +662 512 4747

MALAYSIA

Ph: +603 2615 0146, Fax: +603 2615 0147

SINGAPORE

Ph: +65 6394 3800, Fax: +65 6297 5035

VIETNAM

Hanoi: Ph: +844 934 3968, Fax: +844 934 3956

HCMC: Ph: +848 8219 225/184, Fax: +848 8219 181

ADC Telecommunications, Inc., P.O. Box 1101, Minneapolis, Minnesota USA 55440-1101

Specifications published here are current as of the date of publication of this document. Because we are continuously improving our products, ADC reserves the right to change specifications without prior notice. At any time, you may verify product specifications by contacting your local ADC KRONE office. ADC Telecommunications, Inc. views its patent portfolio as an important corporate asset and vigorously enforces its patents. Products or features contained herein may be covered by one or more U.S. or foreign patents. An Equal Opportunity Employer.

400537_SG 07/08 Revision © 2008 ADC Telecommunications, Inc. All Rights Reserved.